

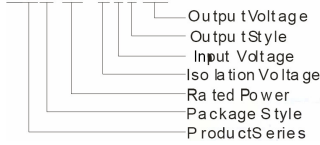
# AC/DC Converter SLBxx series

3, 5, 10, 11 and 15 WATT  
Single / Dual Output

## FEATURES

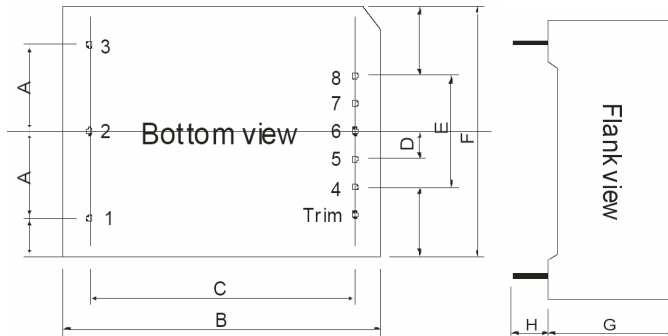
- Universal Input :100 to 240VAC,50/60Hz
- AC and DC all in one (input from the same terminal)
- Low Ripple and Noise
- Overload protection and short circuit protection
- Low loss, green power
- Multiple models available
- industrial level specifications

## MODEL SELECTION



<b>Temperature Ranges</b>	Operating	-25 to +70°C
	Storage	-25 to +105°C
	Power derating above 50°C	3.75%/°C
	Case temperature	+90°C max.
<b>EMC compliance</b>	ESD	IEC/EN 61000-4-2 level 3 6kV/8kV
	RF	IEC/EN61000-4-3
	Surge	IEC/EN 61000-4-5 level 3 1kV/2kV
<b>EMI/RFI conducted</b>	EN55022, level B	
<b>Switching frequency</b>	150 kHz, max.	
<b>Leakage current</b>	0.3mA RMS, typ. 230VAC/50Hz	
<b>Safety standards</b>	IEC60950,EN60950,UL60950	
<b>Safety approvals</b>	EN60950, IEC60950,UL60950	
<b>Safety Class</b>	CLASS I	
<b>Install</b>	PCB	
<b>MTBF</b>	>200 000h@25°C	
<b>Humidity</b>	85% non condensing	

Model Number	Power (W)	Output (Vo1)	Output (Io1-mA)	Output 2 (Vo2/Io2)	Eff. (%)	Ripple & Noise (typ)	Package (mm)
SLB03 10B03	3	3.3V	1000		70	50mV	48.5x36x20.5
SLB03 10B05		5V	600		73		
SLB03 10B12		12V	250		75		
SLB03 10B15		15V	200		76		
SLB03 10B24		24V	125		78		
SLB05 10B03	5	3.3V	1500		72	50mV	55x45x21.0
SLB05 10B05		5V	1000		75		
SLB05 10B09		9V	600		76		
SLB05 10B12		12V	450		77		
SLB05 10B15		15V	350		79		
SLB05 10B24		24V	230		80		
SLB05 10A05		+5V	500	-5V/500mA	71		
SLB05 10A12		+12V	210	-12V/210mA	75		
SLB05 10A15		+15V	170	-15V/170mA	77		
SLB05 10A24		+24V	100	-24V/100mA	78		
SLB10 10B03	10	3.3V	300		73	50mV	62x45x22.5
SLB10 10B05		5V	2000		75		
SLB10 10B09		9V	1100		78		
SLB10 10B12		12V	900		80		
SLB10 10B15		15V	700		81		
SLB10 10B24		24V	450		82		
SLB10 10A05		+5V	1000	-5V/1000mA	74		
SLB10 10A12		+12V	450	-12V/450mA	79		
SLB10 10A15		+15V	350	-15V/350mA	80		
SLB10 10D0505-02I		11	5V	2000	5V/200mA		
SLB15 10B05	15	5V	3000		78	50mV	70x48x23.5
SLB15 10B12		12V	1250		80		
SLB15 10B15		15V	1000		81		
SLB15 10B24		24V	625		83		



PIN #	LB10B	LB10A	LB10C	LB10DI
1	GND	GND	GND	GND
2	AC(N)	AC(N)	AC(N)	AC(N)
3	AC(L)	AC(L)	AC(L)	AC(L)
4	-Vo	-Vo	-Vo1	-Vo1
5	N.P.	N.P.	+Vo1	+Vo1
6	N.P.	Comm	-Vo2	N.P.
7	N.P.	N.P.	Comm	-Vo2
8	+Vo	+Vo	+Vo2	+Vo2
Tr.	Trim	N.P.	N.P.	N.P.