

# 3: Handles

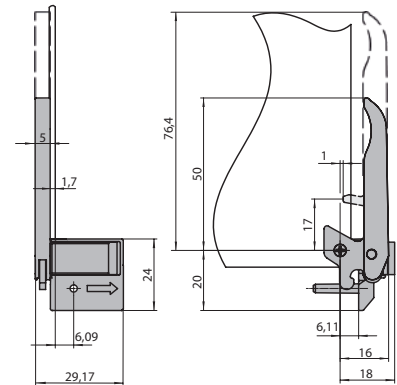


ATCA and the ATCA logo are trademarks of the PCI Industrial Computers Manufacturers Group

## 3.5 Injector/Ejector Handles acc. to AdvancedTCA

### 3.5.1 ATCA Ergonomic Injector / Ejector Handle

- Pre-assembled
- Self-locking screws for front panel and board mounting (Tuflok)
- Plastic parts black (UL94 V-0)
- Base part including alignment pin (zinc die-cast, nickel plated)
- Other versions available on request
- **Scope of delivery:**
  - Handle pre-assembled
  - Retaining screw mounting (loose packed)
  - Screw for board mounting (loose packed)



#### 3.5.1.1 Ergonomic Handle, Microswitch to be assembled on Handle

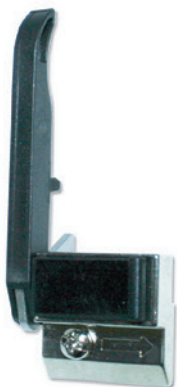
Description	Part-No.
Front top, rear bottom	81-300-00
Front bottom, rear top	81-301-00



#### 3.5.1.2 Ergonomic Handle, Microswitch to be assembled on Front Panel or Board

- Switching pin on lever handle

Description	Part-No.
Front bottom, rear top	81-301-01



# 3: Handles

## 3.5.2 ATCA Classic Handle

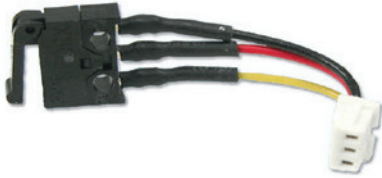


### 3.5.2 ATCA Classic Handle

- Easy operation
- Material: stainless steel
- With latching (hot-swap)
- For self installation
- **Scope of delivery:**
  - 2 steel handles
  - 2 shoulder screws M2.5, Torx size T10
  - 4 + 4 washers
  - 2 latch spring clips
  - Assembly instruction

Description	Part-No.
2 handles	12T130

## 3.5.3 Microswitch Technical Data and Function



### 3.5.3.1 Microswitch for Injector/Ejector Handle

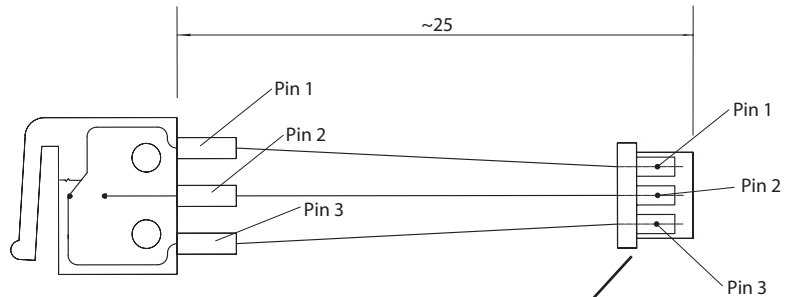
Description	Part-No.
	<b>10 pcs.</b>
Microswitch with pre-assembled wire cable length (25 mm)	81-088-1

#### Technical data

Life circuit:	30 V DC, 5 - 50 mA	30'000 cycles
	60 V DC, 5 mA	30'000 cycles
	60 V DC, 500 mA	15'000 cycles
Temperature:	-25°C to +70°C	
Humidity:	RH 85% max.	
Vibration:	10 Hz to 55 Hz, 18 g	
Shock:	30 g, 11 msec	

#### Switch function:

- Switch open: Connection between Pin 1 and Pin 3
- Switch closed: Connection between Pin 1 and Pin 2



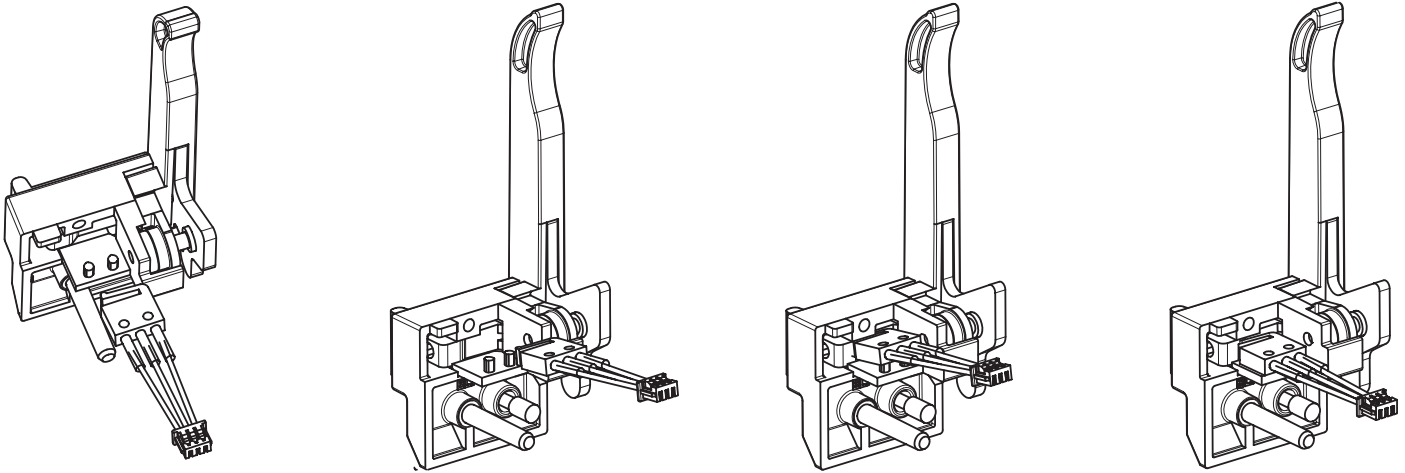
Molex Plug  
Part-No. 51021-0300

Mates with: 51047-0300  
(Molex P/N) 53048-0310  
53047-0310  
53261-0390  
53398-0390

# 3: Handles

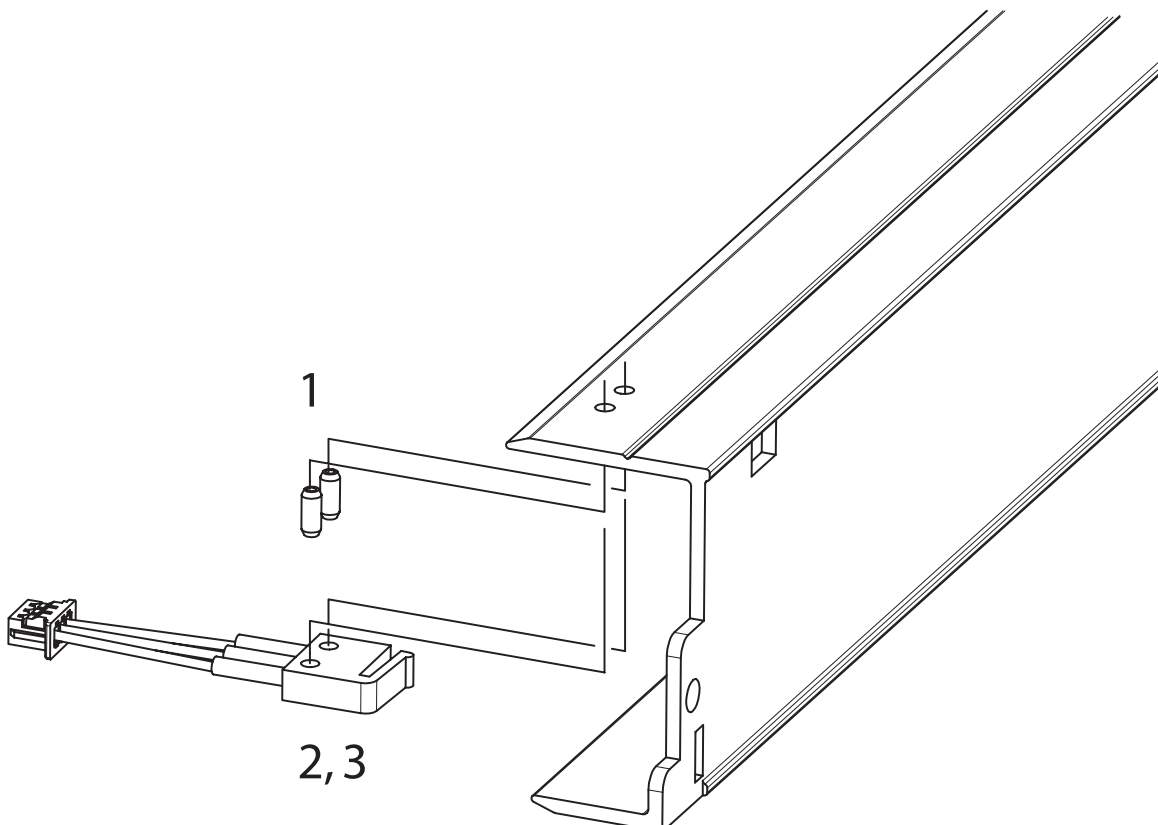
## 3.5.3.1.1 Mounting Microswitch to ATCA Ergonomic Handle:

- Possible without tools
1. Handle stays in the locked (closed) position
  2. Check the microswitch orientation according the drawing below
  3. Push microswitch onto the handle



## 3.5.3.1.2 Mounting Microswitch to Front Panel:

1. Press studs (Elma part number: 5686-05) into the panel
2. Check the microswitch orientation according the drawing below
3. Push microswitch onto the studs



## 3.5.4 Fixing material



### 3.5.4.1 Rounded Head Screw M2.5 x 5 mm

- For front panel mounting
- Self securing (Tuflok)
- Steel, nickel plated
- Philips #1

Description	Part-No.
Rounded head screw M2.5 x 5 mm	5306-11



### 3.5.4.2 Rounded Head Screw M3 x 12.7 mm

- Captive screw for mounting handle to rack
- Steel, nickel plated
- Freedrive, Philips #2

Description	Part-No.
Rounded head screw M3 x 12.7 mm	61-296



### 3.5.4.3 Spezial Screw M2.5 x 8.3 mm

- Screw for mounting PCB to ATCA Ergonomic handle
- Self securing (Tuflok)
- Steel, gavanised, clear passivated
- Philips #1

Description	Part-No.
Rounded head screw M2.5 x 8.3 mm	5441-38