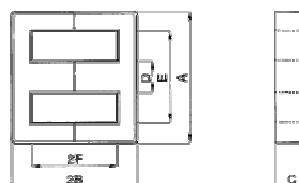
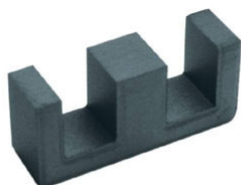




Luženice 10, 344 01 Domažlice
 TEL: +420 379 723 915 FAX: +420 379 725 868
www.atd-elektronik.cz info@atd-elektronik.cz

EE Cores



DIMENSIONS AND EFFECTIVE PARAMETERS

CORES	DIMENSIONS(mm)						EFFECTIVE PARAMETERS				
	A	B	C	D	E	F	CI (mm ⁻¹)	Le (mm)	Ae (mm ²)	Ve (mm ³)	Wt (g/set)
EE4.2	4.35±0.10	1.35±0.05	1.35±0.10	1.20±0.10	3.15±0.10	0.85±0.05	4.71	7.04	1.49	10.49	0.055
EE5.0	5.25±0.10	2.66±0.07	1.95±0.05	1.35±0.05	3.80min	1.98±0.07	4.70	12.50	2.66	33.30	0.24
EE6.3	6.30±0.25	2.82+0.08 -0.07	2.00±0.15	1.32+0.08 -0.07	3.60+0.20 -0.00	1.92+0.08 -0.07	3.64	12.13	3.33	40.39	0.28
EE8.0/5.0	8.00±0.15	5.00±0.08	5.00±0.15	2.90±0.10	5.31±0.15	3.50±0.08	1.48	20.93	14.16	296.37	1.50
EE8.1	8.10±0.20	7.00±0.15	3.70±0.15	1.85±0.15	6.10±0.20	5.75±0.15	4.12	30.45	7.39	225.03	1.16
EE8.3A	8.30±0.20	4.00±0.10	3.90±0.10	2.15±0.15	6.30±0.20	3.00±0.10	2.41	19.33	7.98	154.42	0.76
EE8.3A-1	8.30±0.20	4.00±0.10	3.90±0.10	2.15±0.15	6.30±0.20	3.00±0.10	2.41	19.33	7.98	154.42	0.76
EE8.3B	8.30±0.30	4.15±0.10	1.85±0.15	1.85±0.15	6.00min	3.125±0.10	4.53	19.95	3.67	73.22	0.36
EE8.3B-1	8.30±0.30	4.00±0.10	1.85±0.15	1.85±0.15	6.00min	3.00±0.10	5.32	19.42	3.65	7.09	0.35
EE8.6	8.60±0.30	4.65±0.10	3.65±0.15	1.85±0.20	6.30min	3.55min	2.99	22.02	7.37	162.29	0.87
EE8.8	8.80±0.20	6.00±0.20	2.80±0.10	2.80±0.10	6.00±0.15	4.50±0.10	3.23	25.74	7.95	204.60	1.32
EE8.8A	9.00±0.40	4.00±0.10	1.90±0.10	1.90±0.10	5.20±0.15	2.19±0.16	3.13	15.58	4.98	77.65	0.52
EEL8.8	8.80±0.20	8.50±0.10	2.80±0.10	2.80±0.10	6.00±0.15	7.20±0.10	4.67	36.22	7.75	280.70	1.41
EE9.0	9.00±0.20	6.15±0.20	2.80±0.10	2.80±0.10	6.30±0.15	4.65±0.10	3.39	26.58	7.83	208.23	1.06
EE10	10.20±0.20	5.70±0.10	4.75±0.15	2.45±0.15	7.70min	4.20±0.15	2.13	26.00	12.00	323.00	1.60
EE10/10	10.20±0.20	5.50±0.10	9.85±0.15	2.40±0.15	7.80±0.20	4.30±0.10	1.11	26.36	23.64	623.10	3.32
EE10A	10.00±0.20	6.60±0.20	2.70±0.10	2.80±0.10	7.30±0.15	5.00±0.10	3.80	29.08	7.66	222.75	1.12
EE12.9/10	12.95±0.30	6.50+0 -0.15	9.80±0.20	3.55±0.15	9.15±0.25	4.50+0.30 -0	0.80	29.57	36.80	1088.00	5.34
EE12.9A	12.90±0.30	6.85±0.15	1.80±0.20	6.00±0.10	9.40±0.25	4.50±0.30	3.54	27.43	7.75	212.58	1.28
EE13	13.00±0.30	6.00±0.20	6.15±0.15	2.95+0.00 -0.35	10.50±0.30	4.65±0.15	1.64	28.00	17.00	480.00	2.38
EEL14	14.05±0.25	15.75±0.15	3.50±0.15	4.55±0.15	9.25±0.20	12.25±0.15	3.64	62.06	17.06	1058.68	2.71

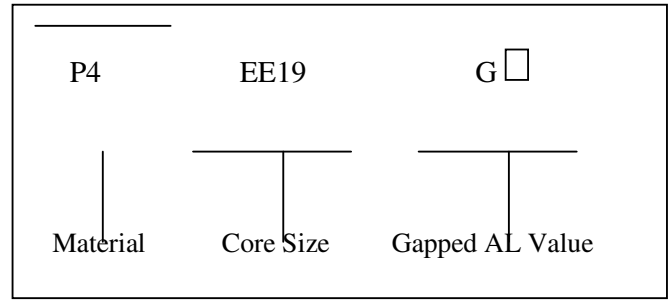
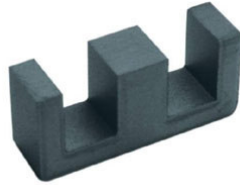
ELECTRICAL CHARACTERISTICS

CORES	AL ± 25% (nH/N ²)						AL ± 30% (nH/N ²)		
	P4	P5	N4	N42	A05	A07	A10(L)	A121(L)	A151(L)
EE4.2		130							
EE5.0	280	250	280		400	440	980min	1080min	1700min
EE6.3								2100	
EE8.0/5.0	1220								
EE8.1						990			
EE8.3A	750	600			1100	1290	3000	3300	
EE8.3A-1						2000+40%- 30%			
EE8.3B	350					580	1800		
EE8.3B-1						600			
EE8.6						1140			
EE8.8	680					1200	2740	3180	
EE8.8A	460								
EEL8.8						950			
EE9.0							2420		
EE10	940				1500	1750	4190	3332min	
EE10/10	1850								
EE10A							2200		
EE12.9/10	2600								
EE12.9A	610								
EE13	1250		1210	1350	1650	1950	3300min		
EEL14	720								

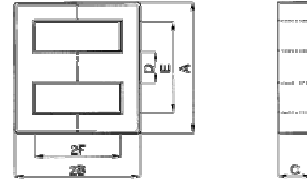
Remark:

1. AL Value Testing condition: 10kHz, 50mV, 100Ts. If testing condition is different from SCHMID'S, please specify upon request & ordering.
2. Gapped core is available, please specify upon request & ordering. SCHMID'S standard gapped core set is a combination of one gapped core and one ungapped core. If gapping on both pcs to make a set is needed, please specify upon request & ordering.
3. L : Mirror Finished Lapping. Please specify upon request & ordering by adding „L“ at the end of Core Size if you need.

EE Cores



DIMENSIONS AND EFFECTIVE PARAMETERS



CORES	DIMENSIONS (mm)						EFFECTIVE PARAMETERS				
	A	B	C	D	E	F	C1 (mm ⁻¹)	Le (mm)	Ae (mm ²)	Ve (mm ³)	Wt (g/set)
EE16	16.00±0.30	7.30±0.20	4.80±0.20	4.00±0.20	11.70min	5.20±0.20	1.81	35.23	19.49	686.55	3.20
EE16A	16.00±0.30	7.15±0.15	6.80±0.20	3.175±0.175	12.50min	5.50±0.10	1.48	35.50	24.00	852.00	3.96
EEL16	16.00±0.30	12.40±0.20	4.80±0.20	4.00±0.20	11.60min	10.20±0.20	2.72	55.00	20.00	1116.00	5.28
EE16.5	16.50±0.30	6.00±0.10	7.10±0.15	4.60±0.10	11.50±0.20	3.65±0.10	0.86	28.93	33.75	976.39	5.08
EE16.5-1	16.48±0.30	6.50+0.25 -0.30	9.00±0.20	3.03±0.15	9.78min	4.20±0.20	0.79	28.55	35.94	1026.09	6.86
EE19	19.10±0.30	8.15±0.30	5.00±0.20	4.55±0.15	14.20min	5.70±0.20	1.67	40.00	23.00	954.00	4.52
EE19/16	19.10±0.30	8.10±0.20	7.90±0.20	4.55±0.15	14.20min	5.70+0.10 -0.20	1.11	40.00	36.00	1507.00	7.10
EEL19	20.00±0.30	13.70±0.25	5.00+0.05 -0.20	4.55±0.20	14.30min	11.15±0.15	2.46	61.00	25.00	1553.00	7.40
EEL19-1	20.00±0.25	13.70±0.25	4.10±0.10	4.55±0.10	14.70±0.20	11.15±0.15	3.09	62.33	20.17	1257.19	6.44
EEL19A	20.00±0.25	13.95±0.25	5.00+0.05 -0.20	4.55±0.10	14.70±0.20	11.40±0.15	2.57	63.33	24.59	1557.28	7.50
EEL19D	20.00±0.30	16.00±0.25	4.90+0.15 -0.10	4.55±0.10	14.70±0.20	13.40±0.15	2.95	71.34	24.16	1723.57	8.82
EE22	22.00±0.40	9.20±0.20	5.70±0.30	5.75±0.25	16.00±0.40	5.40±0.20	0.97	41.96	36.26	1610.00	7.80
EEL22	22.25±0.30	15.26±0.30	5.70±0.30	5.70±0.30	15.50min	11.20±0.30	1.77	65.00	37.00	2405.00	11.74
EEL22A	22.40±0.30	22.20±0.30	4.70±0.20	5.80±0.20	16.00±0.20	18.20±0.20	3.15	93.21	29.58	2757.10	13.66
EE25/19	25.40±0.50	9.70±0.30	6.30±0.20	6.35±0.25	18.55min	6.65±0.35	1.21	48.00	40.00	1962.00	9.36
EEL25	25.40±0.40	15.90±0.25	6.35±0.25	6.35±0.30	18.80min	12.70±0.30	1.79	73.00	40.00	1962.00	9.36
EEL25A	25.10±0.40	14.75±0.20	4.75±0.20	8.40±0.20	17.10±0.20	10.85±0.15	1.68	64.61	38.45	2484.25	8.70
EEL25A/29	25.20±0.25	14.95±0.20	4.75±0.20	8.40±0.20	17.20±0.20	11.05±0.15	1.68	64.61	38.45	2484.25	12.20
EEL25C	25.20±0.25	16.50±0.20	4.00±0.20	8.40±0.20	17.20±0.20	12.55+0.20 -0.15	2.20	71.60	32.51	2327.60	11.48
EEL38	37.30±0.50	20.10±0.25	4.60±0.15	8.00±0.15	28.40min	17.10±0.25	2.89	98.33	34.08	3351.09	17.50
EEL41	41.00±0.60	28.50±0.25	3.50±0.20	16.00±0.25	25.00±0.35	20.50±0.25	2.07	116.13	56.00	6503.28	32.96

ELECTRICAL CHARACTERISTICS

CORES	AL ± 25% (nH/N ²)						AL ± 30% (nH/N ²)		
	P4	P5	N4	N42	A05	A07	A10(L)	A121(L)	A151(L)
EE16	1240	1050			2090	2700	4500		
EE16A	1550				2490	2950	6600	7600	
EEL16	800	700			1590	1980	3300	3850	
EE16.5	2560								
EE16.5-1					4200				
EE19	1300				2240	3000	5100		
EE19/16	2100	1810			3500	4700	9000		
EEL19	800				1820	2280	3800		
EEL19-1	850								
EEL19A	800								
EEL19D	900								
EE22	1900								
EEL22	1400								
EEL22A	860								
EE25/19	1800				3410	4400	8000	8500min	9500min
EEL25	1330				2580	3200	5600	5320min	
EEL25A	1550								
EEL25A/29.9	1500								
EEL25C	1200								
EEL38	920								
EEL41	1350								

Remark

1. AL Value Testing Condition: 10kHz, 50mV, 100Ts. If testing condition is different from SCHMID'S, please specify upon request & ordering.
2. Gapped core is available, please specify upon request & ordering. SCHMID'S standard gapped core set is a combination of one gapped core and one ungapped core. If gapping on both pcs to make a set is needed, please specify upon request & ordering.
3. L: Mirror Finished Lapping. Please specify upon request & ordering by adding „L“ at the end of Core Size if you need.